

Life
Science
Innovation
Network
Japan

Life Science Innovation Network Japan

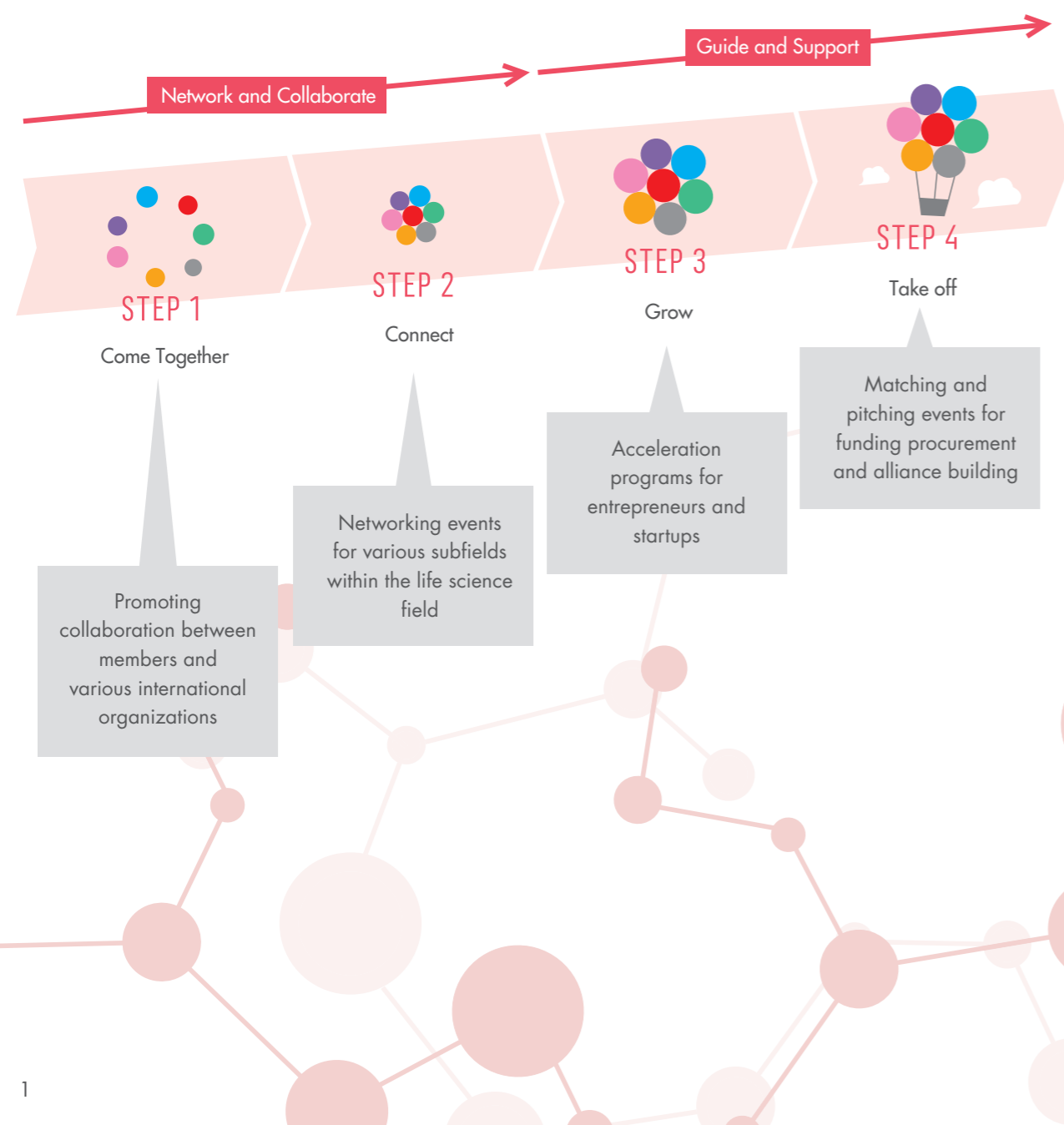
2F Nihonbashi IT building, 3-3-9 Nihonbashi Muromachi, Chuo-ku, Tokyo 103-0022
Phone (within Japan): 03-3241-4911; Phone (outside Japan): +81-3-3241-4911 (Monday-Friday 9:00-17:00)
Website: www.link-j.org/en/ Contact us : contact@link-j.org

Building Ecosystem to Create Innovation in Life Science

LINK-J (Life Science Innovation Network Japan) builds platforms centered in Nihonbashi for networking and exchanging information with people around the world. We serve people involved in life science research and its industry in the broad sense including preventative, presymptomatic and health and longevity medicine such as regenerative medicine, precision medicine, drug development, medical devices and healthcare IT.

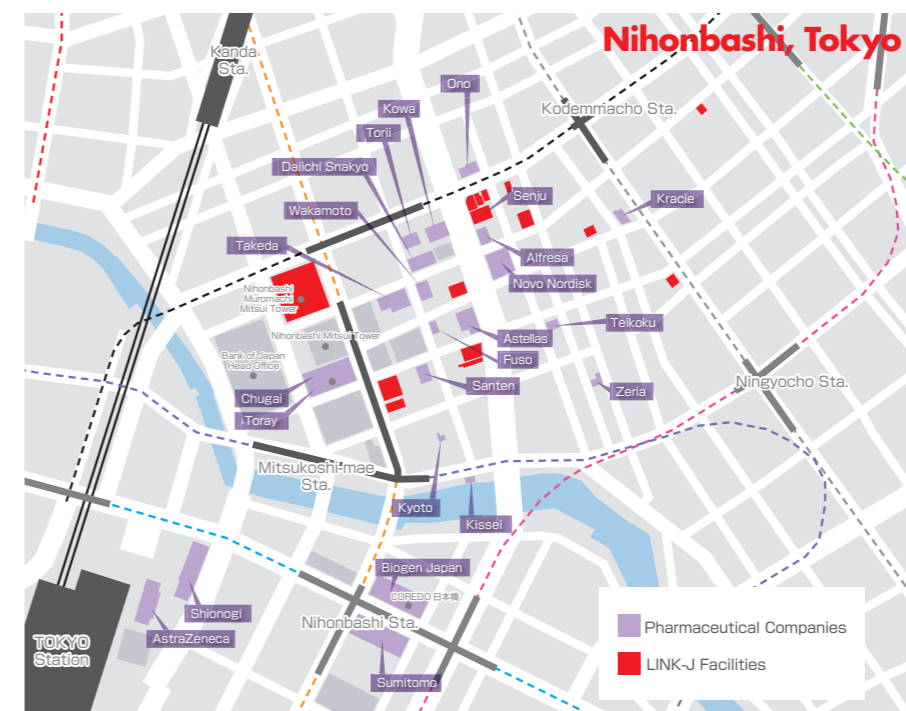
By encouraging the activation and creation of an innovative life science industry in Japan and the world, we contribute to the larger vision of a society where we can live healthily and happily.

Meet with key operators. Attend events & programs to aid product development of your concepts.



Nihonbashi, Tokyo and Doshomachi, Osaka have been pharmaceutical districts for 400 years.

LINK-J is based in Nihonbashi, the historic area of Tokyo where Japan's leading pharmaceutical companies were headquartered in for the past 400 years and where expertise in the life science field come together.



Nihonbashi is located in central Tokyo, where information, people and investors meet from all over the world. Visitors enjoy the urban environment which gives them access to many commercial and accommodation. We create and distribute information from Nihonbashi, this historically and geographically unique place.

Many top Japanese Pharmaceuticals have their roots in Doshomachi, Osaka. There are also many excellent life sciences related to universities and research organizations in this area. LINK-J further accelerates the real exchange between people across fields in this area where a variety of life science-related businesses, such as pharmaceutical, medical equipment, regenerative medicine, and health related service, are being developed through the mutual cooperation between industry, academia and government.



Map of Japan Pharmaceutical Manufacturers Association member organizations and companies.

EVENTS & PROGRAMS



LINK-J creates networking and collaboration opportunities (Steps 1 & 2 : Listed on Page 1) and guiding and supporting (Steps 3 & 4 : Listed on Page 1) activities to build an ecosystem that fosters innovation.

We help commercialize or develop ideas and concepts into products by organically connecting key players in the life science field such as startups, large corporations, academia and venture capital through organizing events and programs.

834+ Events/year
including 595 virtual events



Large Symposiums

We organize symposiums with 300-500 attendees throughout the year. We invite persons who are active in the forefront in the life science field to discuss wide-ranging issues related to regenerative medicine, AI, medical devices, genomes, cancer, etc.

- Industry-Government-Academia Regenerative Medicine Symposium (2016 - 2022)
- MEDTEC INNOVATION Symposium & Pitch (2018-2021)
- Innovation in Cancer Medicine (2019)
- Cell Therapy and Gene Therapy-Beyond Gene Analysis- (2020)
- Frontier in Drug Discovery (2021-2023)

Networkings

We host networking events with LINK-J Supporters, who are entrepreneurs and experienced professionals in the fields of research and development, management, law and finance. We also host and co-host many global-scale events and receptions with international universities and corporations such as UC San Diego and many European and North American organizations.

Networking Events

- Japan Night
- GLOBAL LIFE SCIENCE SESSION
- Global VC's Perspective on Japan
- Advanced Therapy Showcase in Tokyo (ATST)
- LINK-J & UC San Diego Joint Webinar Series

Business Tours

We regularly host tours to visit the world's life science clusters. You can experience each region's cutting-edge research and network.

- Singapore Life Science Business Tour
- Eurobiomed Southern France Business Tour
- San Diego Tour

Acceleration Programs

We organize programs such as "Out of Box Consulting Room" to discuss research concepts for free and "SANDBOX" which creates results through collaboration with students and youth from diverse backgrounds. We also organize our own pitch contest as well as co-sponsor entrepreneurial support programs hosted by venture capital and accelerators with complementary agendas such as "X-DOJO" (Sponsor: INDEE Japan Ltd.) and "BRAVE" (Sponsor: Beyond Next Ventures).



MEMBERS



Top players in the life science field from around the world are joining LINK-J. You derive all the benefits of being our member.

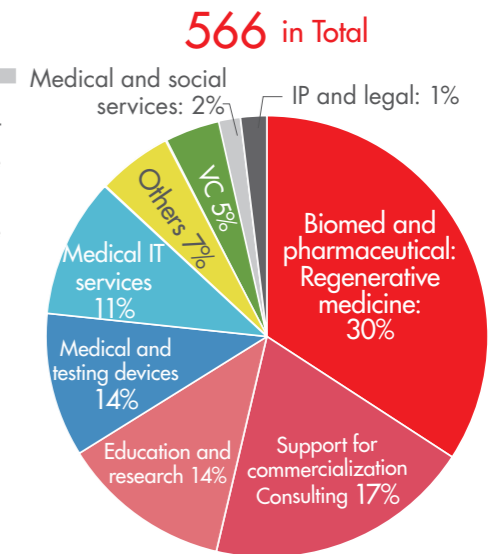
700+ Members



Number of members

A wide range of key players from industry, government and academia have joined us. Fields represented include pharmaceuticals, regenerative medicine, medical devices, education and research, healthcare services, consulting, venture capital, intellectual property and law.(as of SEP 2023)

Membership A **98**
 Membership B **468**
 Membership C **148**



Types of Membership

There are 3 types of LINK-J memberships: A, B, C. Membership A is for corporations with 100+ employees. Membership B is for corporations with up to 100 employees including startups and non-profit organizations (Universities, Research institutes). Membership C is for individuals.

The A and B memberships allow the member organizations to use conference rooms and temporary working rooms for hosting meetings, events and receptions.

Membership A (Corporations)	Membership B (Corporations and NPOs)	Membership C (Individuals)
Corporations with 100+ employees	<ul style="list-style-type: none"> Corporations with up to 100 employees Non-profit organizations (Universities, Research institutes) 	<ul style="list-style-type: none"> Individuals such as doctors, employees, providers of corporations and organizations Employees and providers of non-profit organizations College and graduate students
Enrollment fee: 100,000 yen Annual fee: 500,000 yen	Enrollment fee: 30,000 yen Annual fee: 120,000 yen	Enrollment fee: 2,000 yen Annual fee: 3,000-30,000 yen

Benefits

1 Networking & Collaboration Service

Special members may participate in various "events & programs" hosted by LINK-J and organize "joint events" for other LINK-J members to attend.

2 Grow & Support Service

We will provide support in discussions with sponsors, startup acceleration programs, and communication between members.

3 Promoting Service

Promote your business through newsletters and press releases for members on the LINK-J website, etc.

4 Spaces to Interact

Special members may use our exclusive communication lounges, conference rooms, and more.

About Special Membership ▶



COLLABORATIONS



LINK-J will continue to provide valuable information and increased chances for networking in collaboration with renowned institutions, organizations and universities across the world.

17 Collaborations

Domestic and International Collaborations

We have agreed on partnering with 16 organizations around the world. We collaborate through hosting / joint hosting and / or sponsorship of programs and events, exchanging information, providing services to each member, visiting and collaborating on advertisements.



Date of MOU signed	Name of organization	
May 2016	University of California, San Diego (UCSD), USA	
May 2016	Biocom California, USA	
June 2017	Eurobiomed, France	
July 2017	Kyoto Research Park, Corp., Japan	
December 2017	One Nucleus, UK	
January 2018	Foundation for Biomedical Research and Innovation at Kobe, Japan	
April 2018	Institute for Advanced Biosciences, Keio University, Japan	
June 2018	MedCity, UK	
August 2018	City of Kawasaki, Japan	
June 2019	University of California, Los Angeles (UCLA), USA	
August 2019	City of Yokohama, Japan	
July 2020	Oxford University Innovation (OUI), UK	
September 2020	Osaka, Japan	
September 2020	Kanagawa, Japan	
November 2020	Royal Danish Embassy	
February 2021	Medicen Paris Region	
January 2022	Kyoto University Research Center San Diego	



ORGANIZATIONS



Our activities are supported by Management Advisory Committee members and Supporters who possess specialized expertise and experience.

The Management Advisory Committee is composed of industry leaders who strongly support us with their broad-based knowledge and experience. They also offer strategic advice to the Board of Directors.

LINK-J has a number of Supporters, people with knowledge spanning diverse fields and whose skill sets range from research and development to management, law and finance. Our Supporters, who include entrepreneurs and experts, participate in many events that we organize together and offer one-on-one advice to LINK-J special members.

40+ Supporters



Board members

Chairman of the Board	Hideyuki Okano, M.D., Ph.D.	Professor and Chairman, Department of Physiology, Keio University School of Medicine
Vice Chairman of the Board	Yoshiki Sawa, M.D., Ph.D.	Specially Appointed Professor Division of Health science Osaka University Graduate School of Medicine, Director, Osaka Police Hospital
Vice Chairman of the Board	Takashi Ueda	President and Chief Executive Officer, Mitsui Fudosan Co., Ltd.
Chief Executive Officer	Akihiko Soyama	LINK-J
Co-Chief Executive Officer	Hiroshi Saigusa	LINK-J
Auditor	Yutaro Kikuchi	Attorney at law, Kikuchi Sogo Law Office
Auditor	Shigeru Sugimoto	CEO, Sakura & Co.

Management Advisory Committee

Special Advisor	Yoichiro Matsumoto, Dr. Eng.	Professor Emeritus, The University of Tokyo
Advisor	Takuro Ueda	Director, Office of Cooperative Research and Development, Tohoku University
Advisor	Hiroaki Ueno	President, Japan Pharmaceutical Manufacturers Association (JPMA) President & Representative Director, Mitsubishi Tanabe Pharma Corporation
Advisor	Shinji Ohnishi	Vice President Deputy Director General of Research and Industrial Collaboration Management office, Kyushu University
Advisor	Yasushi Okada	President, The Federation of Pharmaceutical Manufacturers' Associations of JAPAN (FPMAJ) Representative Corporate Officer, COO and Industry Affairs, Eisai Co., Ltd.
Advisor	Keiji Kojima	Director, Representative Executive Officer, President & CEO and Director, Hitachi, Ltd
Advisor	Jun Takahashi M.D., Ph.D.	Professor, Director of Center for iPS Cell Research and Application (CiRA), Kyoto University, Japan
Advisor	Yoshitsugu Shitaka, Ph.D.	Chairman, Forum for Innovative Regenerative Medicine (FIRM) Chief Scientific Officer, Astellas Pharma Inc.
Advisor	Masaaki Mizuno, M.D., Ph.D.	Clinical Professor, Nagoya University Hospital Department of Advanced Medicine Center for Advanced medicine and Clinical Research Director
Advisor	Kohei Miyazono, M.D., Ph.D.	Executive Director, RIKEN
Advisor	Koji Murota	Executive Vice-President for Industry-Government-Academia Collaboration, Kyoto University
Advisor	Akio Yamamoto	Chairman, the Japan Federation of Medical Devices Associations President and Chief Operating Officer, FUJIFILM Healthcare Corporation
Advisor	Shinji Wakao, Ph.D.	Vice President for Research, and Professor, Faculty of Science and Engineering, Waseda University
Advisor	Toshiya Watanabe, Ph.D.	Professor, Institute for Future Initiatives, University of Tokyo
Advisor	Masanobu Komoda	Chairman of the Board, Mitsui Fudosan Co., Ltd.

Executive Office

President and Chief Operating Officer	Shunichi Takahashi, Ph.D.
---------------------------------------	---------------------------

Supporters

Masanori Akita	AIR WATER Inc.	Toru J. Seo, Ph.D.	Lucidaim Co. Ltd.
Tsuyoshi Ito	Beyond Next Ventures	Tohru Takashi, Ph.D.	Japan Agency for Medical Research and Development
Taro Inaba	REMIGES Ventures	Koichiro Tsujimaru, Ph.D.	Tsujimaru International Patent Office
Yo Iwami, M.D., Ph.D.	MedPeer, Inc.	Shingo Tsuda	INDEE Japan Ltd.
Atsushi Usami, Ph.D.	The University of Tokyo Edge Capital Co., Ltd.	Takuma Nakatsuka	POC Clinical Research Inc.
Takahiro Uchida, M.D. Ph.D., MSc.	Sanamed, Inc.	Shogo Nishida	Kakehashi Inc.
Hajime Oshita	MedVenture Partners, Inc.	Takato Noumi, Ph.D.	FORESIGHT & LINX K.K.
Jun Otomo, Ph.D.	Hitachi, Ltd.	Nobuhiko Hibara, Ph.D.	Waseda Business School
Hardy TS Kagimoto, M.D.	Healios K.K.	Ryuji Hiramatsu, Ph.D.	Foundation for Biomedical Research and Innovation at Kobe
Hiroaki Kato, M.D.	Aillis Inc.	Kinji Fuchikami	Mitsui & Co. Global Investment, Inc.
Hiroyuki Kanoh	Forum for Innovative Regenerative Medicine	Ikkei Matsuda, Ph.D., MBA	Science, Art & Research for Reconstruction (SARR)
Tomy Kamada, Ph.D.	TomyK Ltd.	Masashi Matsunaga, Ph.D.	Biospire Japan, Ltd.
Makio Kitazawa	Boston Consulting Group	Mika Mizunuma, Ph.D.	Craif, Inc
Hiroaki Kitano, Ph.D.	Sony Computer Science Laboratories	Keita Mori	SanBio Company Limited
Takashi Kyoizumi, M.D., Ph.D.	University of California, San Diego	Yuji Yamamoto, M.D., MBA	MinaCare Co., Ltd.
Masashi Kiyomine	Kicker Ventures	Masayuki Yokota	Tokyo Stock Exchange, Inc.
Yohei Sawayama	Coral Capital	Hayato Watanabe, CFA	CBC Group,
Aki Shimauchi	INDEE Medical, Inc.	Ulrike Schaeede, Ph.D.	University of California, San Diego (UCSD)
Tsutomu Sugaya	Pharma-Biz Management Initiative	Rami Suzuki, Ph.D.	Moderna Japan, Inc.

FACILITIES



We operate conference rooms and communication lounges exclusively for LINK-J members located in the middle of Nihonbashi, central business district. We help you build new networks and create your business in a bright and open atmosphere.

16+ Buildings

Conference Rooms

There are rooms of various sizes that can be used for meetings, lectures, seminars, happy hours and special events, etc. These spaces are also equipped with sound and audio-visual facilities necessary for presentations. (Some incur extra charges)

Communication Lounges

The LINK-J Communication Lounge is exclusively for members. There are books, complementary drinks and snacks. Lounge on the 10th floor in Nihonbashi Life Science Building and foyer area of the Nihonbashi Life Science Hub is available for meets-and-greets and receptions, etc.

Temporary Working Rooms

On the 3rd floor of Nihonbashi Life Science Building, there are rooms that can be reserved on a per-day basis. (Up to 7 days)

Serviced Offices

From secured individual booths to open plan, we offer a wide-range of possibilities and are pleased to accommodate your needs. These offices are furnished and it is available to register this location as your office. Since no deposit is required, the initial cost can be kept low.

Offices and Laboratories

We offer small to large sized office floors to suit the size of your business in Tokyo and Osaka. Rental wet labs are provided in Tokyo and Chiba.

Overseas Facilities

LINK-J Meeting Room @ UC San Diego
YOKOHAMA • LINK-J Life Science Lounge @ NYC



ACCESS



Nihonbashi Life Science Facilities are located in a convenient location that is about a 10-minute walk from Tokyo station and many subway lines are available. Nihonbashi is also a place with a high concentration of commercial facilities with many historic buildings while serving as a hub for business activities.

Join us for creative innovation!

Location

Nihonbashi, Tokyo



Life Science Innovation Network Japan (LINK-J)

Address: 2F Nihonbashi IT Building, 3-3-9 Nihonbashi Muromachi, Chuo-ku, Tokyo 103-0022

Osaka



Lifescience HUB West

4F Midotsuji Mitsui Building, 4-1-3 Bingo-machi, Chuo-ku, Osaka-city, Osaka, 541-0051

- | | | |
|---------------------------------------|---|---|
| 1. Nihonbashi Life Science Building | 6. Nihonbashi Life Science Building 6 | 11. Nihonbashi Life Science Building 11 |
| 2. Nihonbashi Life Science Building 2 | 7. Nihonbashi Life Science Building 7 | 12. Nihonbashi Life Science HUB |
| 3. Nihonbashi Life Science Building 3 | 8. Nihonbashi Life Science Building 8 | 13. GLOBAL LIFESCIENCE HUB |
| 4. Nihonbashi Life Science Building 4 | 9. Nihonbashi Life Science Building 9 | 14. Fukushima Building |
| 5. Nihonbashi Life Science Building 5 | 10. Nihonbashi Life Science Building 10 | 15. MFPR Nihonbashi Honcho Building |

Tonomachi, Kanagawa

Kawasaki KING SKYFRONT 1F Research Gate Building II, 3-25-10, Tonomachi, Kawasaki-ku, Kawasaki-city, Kanagawa, 210-0821

Kasai, Tokyo



Mitsui Link-Lab Kasai

(within Daiichi Sankyo Kasai R&D Center)
1-16-13 Kitakasai, Edogawa-ku, Tokyo
134-8630

Shinkiba, Tokyo



Mitsui Link-Lab Shinkiba 1

2-3-8 Shinkiba, Koto-ku, Tokyo
136-0075

Kashiwanoha, Chiba



Mitsui Link-Lab Kashiwa-no-ha 1

6-6-2 Kashiwanoha, Kashiwa City, Chiba
277-0882

LINK-J
Communication lounge
Members Only