

Life
Science
Innovation
Network
Japan

Life Science Innovation Network Japan

2F Nihonbashi IT building, 3-3-9 Nihonbashi Muromachi, Chuo-ku, Tokyo 103-0022

Phone (within Japan): 03-3241-4911; Phone (outside Japan): +81-3-3241-4911, Fax (within Japan): 03-3241-3757;

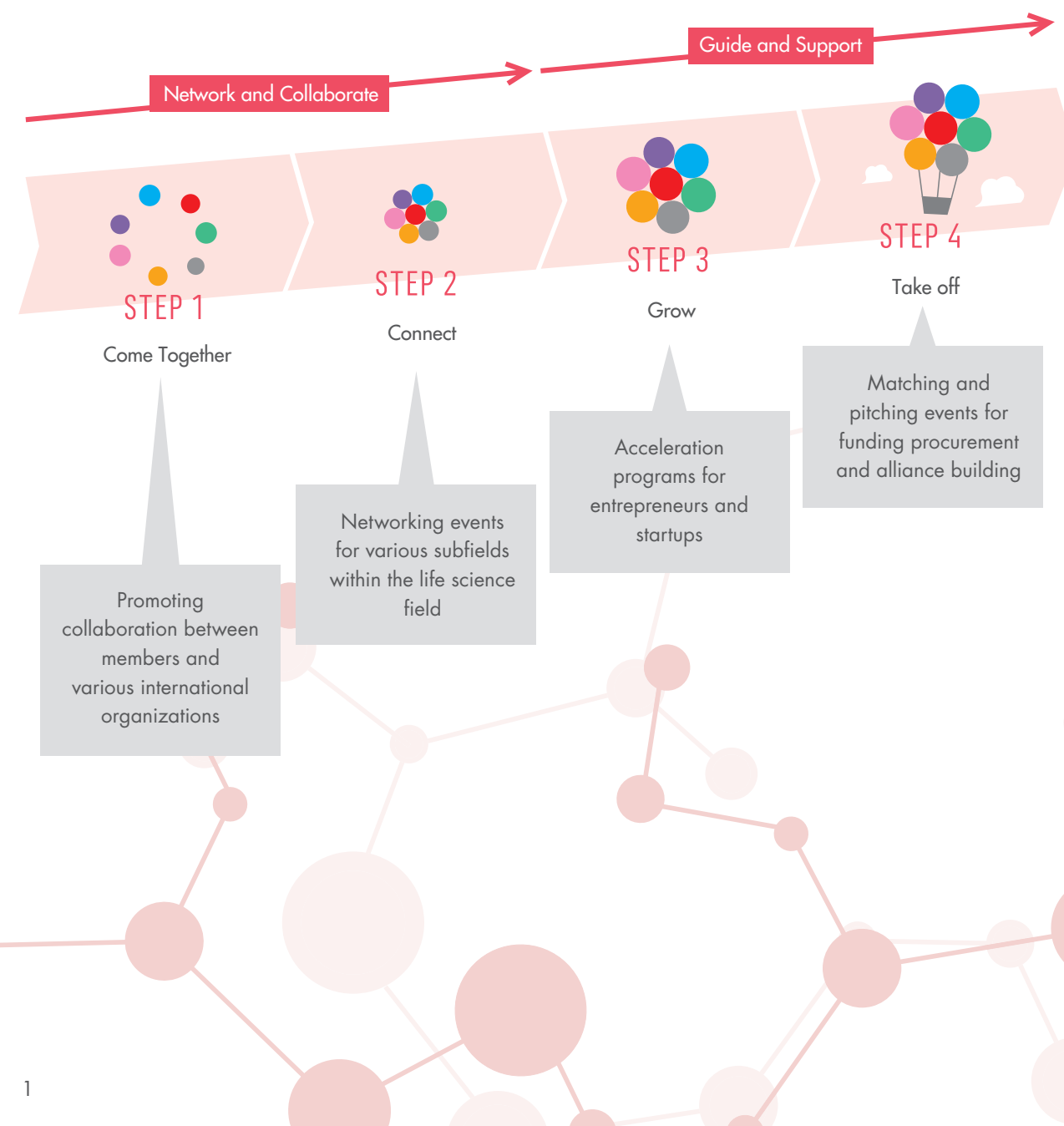
Fax (outside Japan): +81-3-3241-3757 (Monday-Friday 9:00-17:00) Website: www.link-j.org

Building Ecosystem to Create Innovation in Life Science

LINK-J (Life Science Innovation Network Japan) builds platforms centered in Nihonbashi for networking and exchanging information with people around the world. We serve people involved in life science research and its industry in the broad sense including preventative, presymptomatic and health and longevity medicine such as regenerative medicine, precision medicine, drug development, medical devices and healthcare IT.

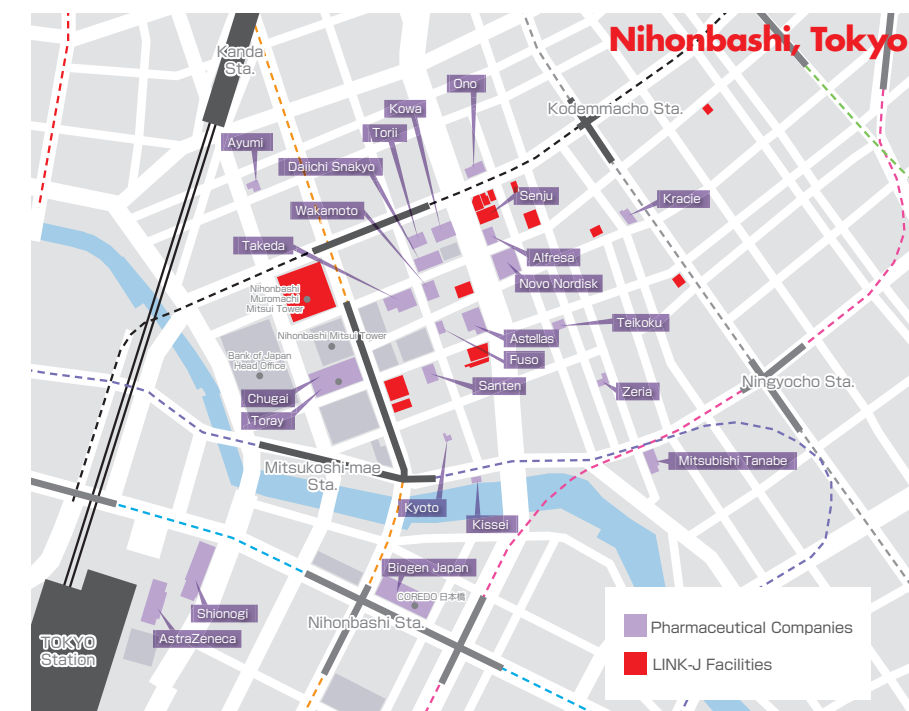
By encouraging the activation and creation of an innovative life science industry in Japan and the world, we contribute to the larger vision of a society where we can live healthily and happily.

Meet with key operators. Attend events & programs to aid product development of your concepts.



Nihonbashi, Tokyo and Doshomachi, Osaka have been pharmaceutical districts for 400 years.

LINK-J is based in Nihonbashi, the historic area of Tokyo where Japan's leading pharmaceutical companies were headquartered in for the past 400 years and where expertise in the life science field come together.



Nihonbashi is located in central Tokyo, where information, people and investors meet from all over the world. Visitors enjoy the urban environment which gives them access to many commercial and accommodation. We create and distribute information from Nihonbashi, this historically and geographically unique place.

Many top Japanese Pharmaceuticals have their roots in Doshomachi, Osaka. There are also many excellent life sciences related to universities and research organizations in this area. LINK-J further accelerates the real exchange between people across fields in this area where a variety of life science-related businesses, such as pharmaceutical, medical equipment, regenerative medicine, and health related service, are being developed through the mutual cooperation between industry, academia and government.



Map of Japan Pharmaceutical Manufacturers Association member organizations and companies.

EVENTS & PROGRAMS



LINK-J creates networking and collaboration opportunities (Steps 1 & 2 : Listed on Page 1) and guiding and supporting (Steps 3 & 4 : Listed on Page 1) activities to build an ecosystem that fosters innovation.

We help commercialize or develop ideas and concepts into products by organically connecting key players in the life science field such as startups, large corporations, academia and venture capital through organizing events and programs.

524+ Events/year
including 383 virtual events



Large Symposiums

We organize symposiums with 300-500 attendees throughout the year. We invite persons who are active in the forefront in the life science field to discuss wide-ranging issues related to regenerative medicine, AI, medical devices, genomes, cancer, etc.

- Industry-Government-Academia Regenerative Medicine Symposium (2016 - 2021)
- MEDTEC INNOVATION Symposium & Pitch (2018-2021)
- Innovation in Cancer Medicine (2019)
- Cell Therapy and Gene Therapy-Beyond Gene Analysis- (2020)
- Frontier in Drug Discovery (2021)

Networkings

We host networking events with LINK-J Supporters, who are entrepreneurs and experienced professionals in the fields of research and development, management, law and finance. We also host and co-host many global-scale events and receptions with international universities and corporations such as UC San Diego and many European and North American organizations.

Networking Events

- - UCSD
- - UCLA
- - Princeton University
- - Seminars with Embassies and Governments
- - San Diego
- - Queensland, Australia
- - Sweden
- - Israel

Business Tours

We regularly host tours to visit the world's life science clusters. You can experience each region's cutting-edge research and network.

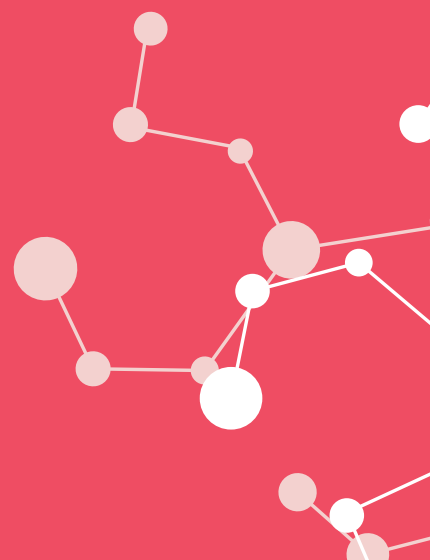
- Singapore Life Science Business Tour
- Eurobiomed Southern France Business Tour
- San Diego Tour

Acceleration Programs

We organize programs such as "Out of Box Consulting Room" to discuss research concepts for free and "SANDBOX" which creates results through collaboration with students and youth from diverse backgrounds. We also organize our own pitch contest as well as co-sponsor entrepreneurial support programs hosted by venture capital and accelerators with complementary agendas such as "ZENTECH DOJO NIHONBASHI" (Sponsor: INDEE Japan Ltd.) and "BRAVE" (Sponsor: Beyond Next Ventures).



MEMBERS



Top players in the life science field from around the world are joining LINK-J. You derive all the benefits of being our member.

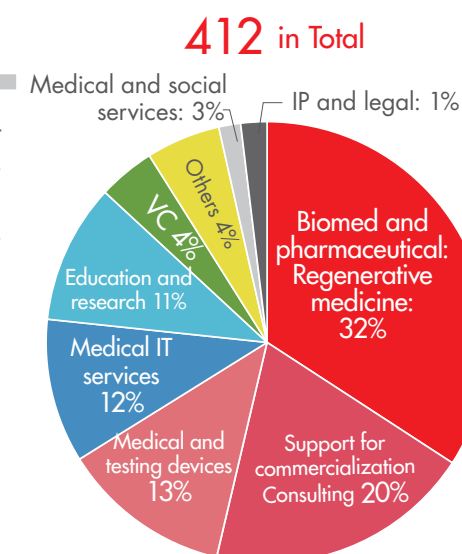
540+ Members



Number of members

A wide range of key players from industry, government and academia have joined us. Fields represented include pharmaceuticals, regenerative medicine, medical devices, education and research, healthcare services, consulting, venture capital, intellectual property and law.(as of FEB 2022)

Membership A **66**
Membership B **346**
Membership C **131**



Types of Membership

There are 3 types of LINK-J memberships: A, B, C. Membership A is for corporations with 100+ employees. Membership B is for corporations with up to 100 employees including startups and non-profit organizations (Universities, Research institutes). Membership C is for individuals.

The A and B memberships allow the member organizations to use conference rooms and temporary working rooms for hosting meetings, events and receptions.

Membership A (Corporations)	Membership B (Corporations and NPOs)	Membership C (Individuals)
Corporations with 100+ employees	<ul style="list-style-type: none"> Corporations with up to 100 employees Non-profit organizations (Universities, Research institutes) 	<ul style="list-style-type: none"> Individuals such as doctors, employees, providers of corporations and organizations Employees and providers of non-profit organizations College and graduate students
Enrollment fee: 100,000 yen Annual fee: 500,000 yen	Enrollment fee: 30,000 yen Annual fee: 120,000 yen	Enrollment fee: 2,000 yen Annual fee: 3,000-30,000 yen

Benefits

Events and Programs (Members' exclusive price)
Networkings
Consulting by LINK-J Supporters
Use of the LINK-J Exclusive Communication Lounge (Complimentary)
Use of the Service Office (Separate contracts required)
Events and programs notification service via LINK-J website and e-mail
Publication on LINK-J website, brochure, etc.
Private use of the LINK-J Exclusive Communication Lounge (Members' exclusive price)
Use of the conference rooms or temporary working rooms (Members' exclusive price)

COLLABORATIONS

LINK-J will continue to provide valuable information and increased chances for networking in collaboration with renowned institutions, organizations and universities across the world.

17 Collaborations



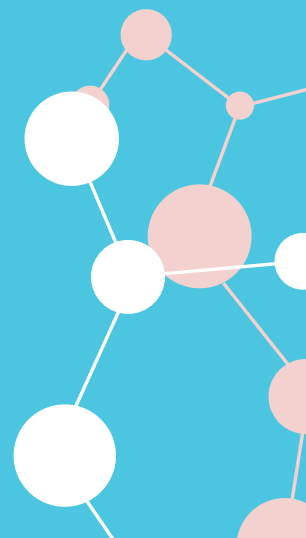
Domestic and International Collaborations

We have agreed on partnering with 16 organizations around the world. We collaborate through hosting / joint hosting and / or sponsorship of programs and events, exchanging information, providing services to each member, visiting and collaborating on advertisements.



Date of MOU signed	Name of organization	
May 2016	University of California, San Diego (UCSD), USA	
May 2016	Biocom California, USA	
June 2017	Eurobiomed, France	
July 2017	Kyoto Research Park, Corp., Japan	
December 2017	One Nucleus, UK	
January 2018	Foundation for Biomedical Research and Innovation at Kobe, Japan	
April 2018	Institute for Advanced Biosciences, Keio University, Japan	
June 2018	MedCity, UK	
August 2018	City of Kawasaki, Japan	
June 2019	University of California, Los Angeles (UCLA), USA	
August 2019	City of Yokohama, Japan	
July 2020	Oxford University Innovation (OUI), UK	
September 2020	Osaka, Japan	
September 2020	Kanagawa, Japan	
November 2020	Royal Danish Embassy	
February 2021	Medicen Paris Region	
January 2022	Kyoto University Research Center San Diego	

ORGANIZATIONS



Our activities are supported by Management Advisory Committee members and Supporters who possess specialized expertise and experience.

The Management Advisory Committee is composed of industry leaders who strongly support us with their broad-based knowledge and experience. They also offer strategic advice to the Board of Directors.

LINK-J has a number of Supporters, people with knowledge spanning diverse fields and whose skill sets range from research and development to management, law and finance. Our Supporters, who include entrepreneurs and experts, participate in many events that we organize together and offer one-on-one advice to LINK-J special members.

40+ Supporters



Board members

Chairman of the Board	Hideyuki Okano, M.D., Ph.D.	Professor and Chairman, Department of Physiology, Keio University School of Medicine
Vice Chairman of the Board	Yoshiki Sawa, M.D., Ph.D.	Specially Appointed Professor Division of Health science Osaka University Graduate School of Medicine, Director, Osaka Police Hospital
Director	Takashi Ueda	Managing Director, Senior Executive Managing Officer, Mitsui Fudosan Co., Ltd.
Director	Akihiko Soyama	President and Chief Executive Officer, Director of Life Science Innovation Network Japan
Auditor	Yutaro Kikuchi	Attorney at law, Kikuchi Sogo Law Office
Auditor	Shigeru Sugimoto	CEO, Sakura & Co.

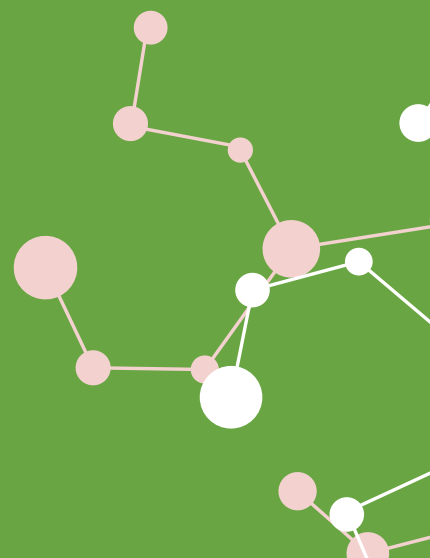
Management Advisory Committee

Special Advisor	Yoichiro Matsumoto, Dr. Eng.	Professor Emeritus, The University of Tokyo
Special Advisor	Shinya Yamanaka, M.D., Ph.D.	Director and Professor, Center for iPS Cell Research and Application (CiRA) Kyoto University; Nobel laureate in Physiology / Medicine
Advisor	Takuro Ueda	Director, Office of Cooperative Research and Development, Tohoku University
Advisor	Shinji Ohnishi	Vice President Deputy Director General of Research and Industrial Collaboration Management office, Kyushu University
Advisor	Yasushi Okada	President, Japan Pharmaceutical Manufacturers Association (JPMA) Representative Corporate Officer, COO and Industry Affairs, Eisai Co., Ltd.
Advisor	Hironori Kasahara, Ph.D.	Senior Executive Vice President for Research and IT Promotion, Waseda University
Advisor	Hidetoshi Kotera	Executive Director, RIKEN
Advisor	Ken-ichiro Hata, D.D.S., Ph.D.	Chairman, Forum for Innovative Regenerative Medicine (FIRM) / President and CEO, Japan Tissue Engineering Co., Ltd. (J-TEC)
Advisor	Toshiaki Higashihara	President & CEO, Hitachi, Ltd.
Advisor	Sunao Manabe	President, The Federation of Pharmaceutical Manufacturers' Associations of JAPAN (FPMJ) Representative Director, Member of the Board, President and CEO at Daiichi Sankyo Co., Ltd.
Advisor	Masaaki Mizuno, M.D., Ph.D.	Clinical Professor, Nagoya University Hospital Department of Advanced Medicine Center for Advanced medicine and Clinical Research Director
	Takayoshi Mimura	Chairman, the Japan Federation of Medical Devices Associations Chairman of the Board, Terumo Corporation
Advisor	Koji Murota	Executive Vice-President for Industry-Government-Academia Collaboration, Kyoto University
Advisor	Toshiya Watanabe, Ph.D.	Professor, Institute for Future Initiatives, University of Tokyo
Advisor	Masanobu Komoda	President and CEO, Mitsui Fudosan Co., Ltd.

Supporters

Masanori Akita	MTI Ltd.	Toru J. Seo, Ph.D.	Lucidaim Co. Ltd.
Tsuyoshi Ito	Beyond Next Ventures	Tohru Takashi, Ph.D.	Japan Agency for Medical Research and Development
Taro Inaba	REMIGES Ventures	Shunichi Takahashi, Ph.D.	Bayer Yakuhin, Ltd.
Yo Iwami, M.D., Ph.D.	MedPeer, Inc.	Koichiro Tsujimaru, Ph.D.	Tsujimaru International Patent Office
Atsushi Usami, Ph.D.	The University of Tokyo Edge Capital Co., Ltd.	Shingo Tsuda	INDEE Japan Ltd.
Takahiro Uchida, M.D. Ph.D., MSc.	Japanese Organization for Medical Device Development, Inc.	Takuma Nakatsuka	POC Clinical Research Inc.
Hajime Oshita	MedVenture Partners, Inc.	Shogo Nishida	Boston Consulting Group
Jun Otomo, Ph.D.	Hitachi, Ltd.	Takato Noumi, Ph.D.	FORESIGHT & LINX K.K.
Hardy TS Kagimoto, M.D.	Healios K.K.	Nobuhiko Hibara, Ph.D.	Waseda Business School
Hiroaki Kato, M.D.	Aillis Inc.	Ryuji Hiramatsu, Ph.D.	Foundation for Biomedical Research and Innovation at Kobe
Hiroyuki Kanoh	Forum for Innovative Regenerative Medicine	Kinji Fuchikami	Mitsui & Co. Global Investment, Inc.
Tomy Kamada, Ph.D.	TomyK Ltd.	Ikkei Matsuda, Ph.D., MBA	Science, Art & Research for Reconstruction (SARR)
Makio Kitazawa	Boston Consulting Group	Masashi Matsunaga, Ph.D.	Biospire Japan, Ltd.
Hiroaki Kitano, Ph.D.	Sony Computer Science Laboratories	Mika Mizunuma, Ph.D.	Craif, Inc
Takashi Kiyozumi, M.D., Ph.D.	University of California, San Diego	Keita Mori	SanBio Company Limited
Masashi Kiyomine	Kicker Ventures	Daiki Moriyama	Whole Earth Foundation
Yohei Sawayama	Coral Capital	Yuji Yamamoto, M.D., MBA	MinaCare Co., Ltd.
Aki Shimauchi	INDEE Medical, Inc.	Masayuki Yokota	The Organization of Global Financial City Tokyo
Tsutomu Sugaya	Nobelpharma Co., Ltd.	Hayato Watanabe, CFA	CBC Group,
Rami Suzuki, Ph.D.	Moderna Japan, Inc.	Ulrike Schaeде, Ph.D.	University of California, San Diego (UCSD)

FACILITIES



We operate conference rooms and communication lounges exclusively for LINK-J members located in the middle of Nihonbashi, central business district. We help you build new networks and create your business in a bright and open atmosphere.

16+ Buildings

Conference Rooms

There are rooms of various sizes that can be used for meetings, lectures, seminars, happy hours and special events, etc. These spaces are also equipped with sound and audio-visual facilities necessary for presentations. (Some incur extra charges)

- Nihonbashi Life Science Building
- Nihonbashi Life Science Building 2
- Nihonbashi Life Science HUB
- Lifescience HUB West
- GLOBAL LIFESCIENCE HUB
- Mitsui Link-Lab Shinkiba 1

Communication Lounges

The LINK-J Communication Lounge is exclusively for members. There are books, complementary drinks and snacks. Lounge on the 10th floor in Nihonbashi Life Science Building and foyer area of the Nihonbashi Life Science Hub is available for meets-and-greets and receptions, etc.

- Nihonbashi Life Science Building
- Nihonbashi Life Science Building 3,7
- Nihonbashi Life Science HUB
- Lifescience HUB West
- GLOBAL LIFESCIENCE HUB
- Mitsui Link-Lab Shinkiba 1

Temporary Working Rooms

On the 3rd floor of Nihonbashi Life Science Building, there are rooms that can be reserved on a per-day basis. (Up to 7 days)

Serviced Offices

From secured individual booths to open plan, we offer a wide-range of possibilities and are pleased to accommodate your needs. These offices are furnished and it is available to register this location as your office. Since no deposit is required, the initial cost can be kept low.

- Nihonbashi Life Science Building
- Nihonbashi Life Science Building 3,7
- Lifescience HUB West
- GLOBAL LIFESCIENCE HUB

Offices and Laboratories

We offer small to large sized offices to suit the size of your business. The wet lab facilities are necessary for practical application of research results and creation of innovation.

Laboratories:

- Mitsui Link-Lab Kasai
- Mitsui Link-Lab Shinkiba 1



ACCESS

Nihonbashi Life Science Facilities are located in a convenient location that is about a 10-minute walk from Tokyo station and many subway lines are available. Nihonbashi is also a place with a high concentration of commercial facilities with many historic buildings while serving as a hub for business activities.

Join us for creative innovation!

Location



Life Science Innovation Network Japan (LINK-J)

Address: 2F Nihonbashi IT Building, 3-3-9 Nihonbashi Muromachi, Chuo-ku, Tokyo 103-0022

Phone (within Japan): 03-3241-4911;
Phone (outside Japan): +81-3-3241-4911
Fax (within Japan): 03-3241-3757;
Fax (outside Japan): +81-3-3241-3757

Nihonbashi, Tokyo

1. Nihonbashi Life Science Building	Nihonbashi Honcho, 2-3-11, Chuo-ku, Tokyo, 103-0023
2. Nihonbashi Life Science Building 2	Nihonbashi Honcho, 3-11-5, Chuo-ku, Tokyo, 103-0023
3. Nihonbashi Life Science Building 3 (Former Tosho Building)	Nihonbashi Honcho, 3-8-3, Chuo-ku, Tokyo, 103-0023
4. Nihonbashi Life Science Building 4	Nihonbashi Honcho, 3-8-4, Chuo-ku, Tokyo, 103-0023
5. Nihonbashi Life Science Building 5 (Former Nihonbashi Honcho 3-Chome Building)	Nihonbashi Honcho, 3-8-5, Chuo-ku, Tokyo 103-0023
6. Nihonbashi Life Science Building 6	Nihonbashi Honcho, 3-9-4, Chuo-ku, Tokyo, 103-0023
7. Nihonbashi Life Science Building 7 (Former Ueno Building)	Nihonbashi Horidomecho, 1-9-10, Chuo-ku, Tokyo, 103-0012
8. Nihonbashi Life Science Building 8	Nihonbashi Horidomecho, 1-3-15, Chuo-ku, Tokyo, 103-0012
9. Nihonbashi Life Science Building 9	Nihonbashi Odenmacho, 12-9, Chuo-ku, Tokyo, 103-0011
10. Nihonbashi Life Science Building 10	Nihonbashi Honcho, 1-5-9, Chuo-ku, Tokyo, 103-0023
11. Nihonbashi Life Science Building 11	Nihonbashi Honcho, 1-5-11, Chuo-ku, Tokyo, 103-0023
12. Nihonbashi Life Science HUB	Nihonbashi Muromachi, 1-5-5, Chuo-ku, Tokyo 103-0022 8F., Muromachi Chibagin Mitsui Building
13. GLOBAL LIFESCIENCE HUB	Nihonbashi Muromachi, 3-2-1, Chuo-ku, Tokyo 103-0022 7F., Nihonbashi Muromachi Mitsui Tower
14. Fukushima Building	Nihonbashi Muromachi, 1-5-3, Chuo-ku, Tokyo 103-0022
15. MFPR Nihonbashi Honcho Building	Nihonbashi Honcho, 3-7-2, Chuo-ku, Tokyo, 103-0023

Kasai, Tokyo



Mitsui Link-Lab Kasai
(within Daiichi Sankyo Kasai R&D Center)
1-16-13 Kitakasai, Edogawa-ku, Tokyo 134-8630

Shinkiba, Tokyo



Mitsui Link-Lab Shinkiba 1
2-3-8 Shinkiba, Koto-ku, Tokyo
136-0075

Osaka



Lifescience HUB West
4F Midosuji Mitsui Building, 4-1-3 Bingo-machi,
Chuo-ku, Osaka-city, Osaka, 541-0051